

Module Respiratory System (Case-3, week-3)

Asthma

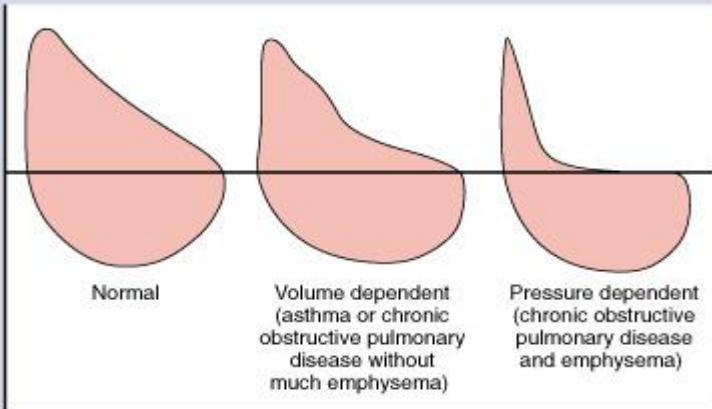
Clinical Case

A 35 years old gentleman has had shortness of breath for five years that is episodic and worse in the winters. He complains of sneezing & nasal blockage on & off since childhood. He smokes cigarettes a pack a day for the last 2 years. His mother is taking inhalers for a long time. He has nasal polyps and a pigeon-shaped chest. There are bilateral wheezes in expiration on auscultation.

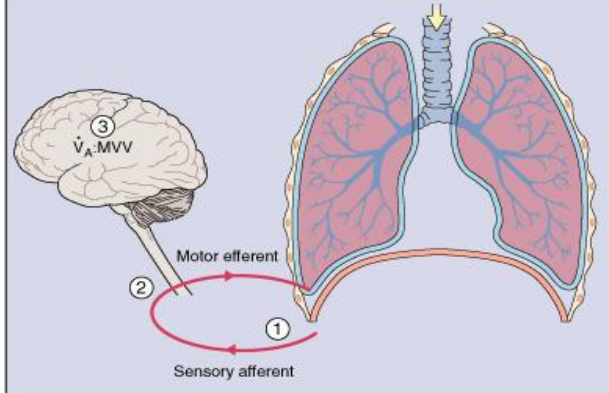
Investigations revealed mild eosinophilia on peripheral film. On spirometry his FEV1/FVC ratio is 60; Prebronchodilator FEV1 is 60% & FVC is 76% of the predicted. Post bronchodilator FEV1 is 76% of the predicted. The CXR is shown below.



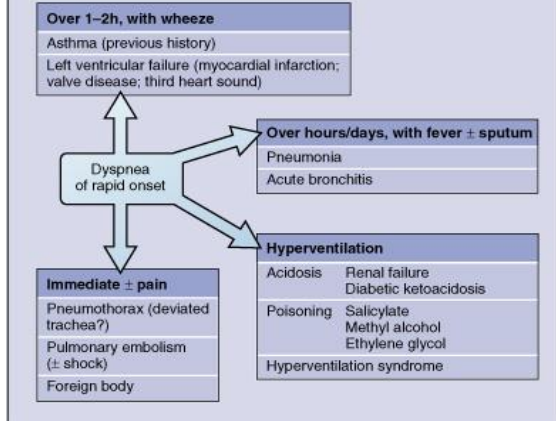
Flow-volume curves



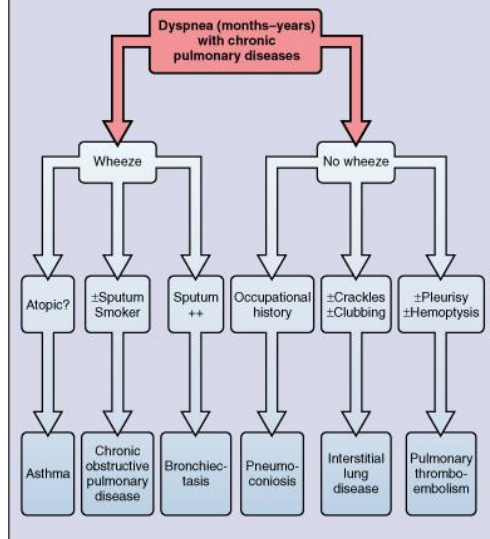
Mechanisms of dyspnea



Differential diagnosis of dyspnea of rapid onset



Differential diagnosis of dyspnea of slow onset in chronic pulmonary disease



Associated symptoms give important clues to the cause of dyspnea

